

Supporting people into training and employment

Elaine Walls

Senior Partnership Manager,
Equality, Diversity & Inclusion

Skills
Development
Scotland

**SDS
Equality
Strategy
Outcomes**

Outcome One	People with lived experience of poverty, and from protected characteristic groups known to face inequality, have improved participation and progression in learning and employment
Outcome Two	Women and girls can access and sustain learning and careers which reflect their skills and interests, enabled by the adoption of gender-sensitive approaches from employers and key influencers
Outcome Three	Lived experience of people from protected characteristic groups is a fundamental component of the design and development of SDS services, improving their customer experience and outcomes

SDS Employability

Activity

2021/22 SDS key roles within the employability landscape:

Employability Fund	available across all 32 LAs
Other Employability Strands e.g.	<ul style="list-style-type: none">• National Transition Training Fund strand (individuals aged 25+ who were made redundant due to COVID)• Green Jobs Academy• Pathway Apprenticeships
No-one Left behind	Careers Advice Information and Guidance (CIAG) Team have a key role

SDS in the young person's career path

Post-school: extended support

All-age, longer to support
Warm handover



S3 to senior phase: Intensive support

Level/type of support
Post-school transitions



S2/3: subject choice

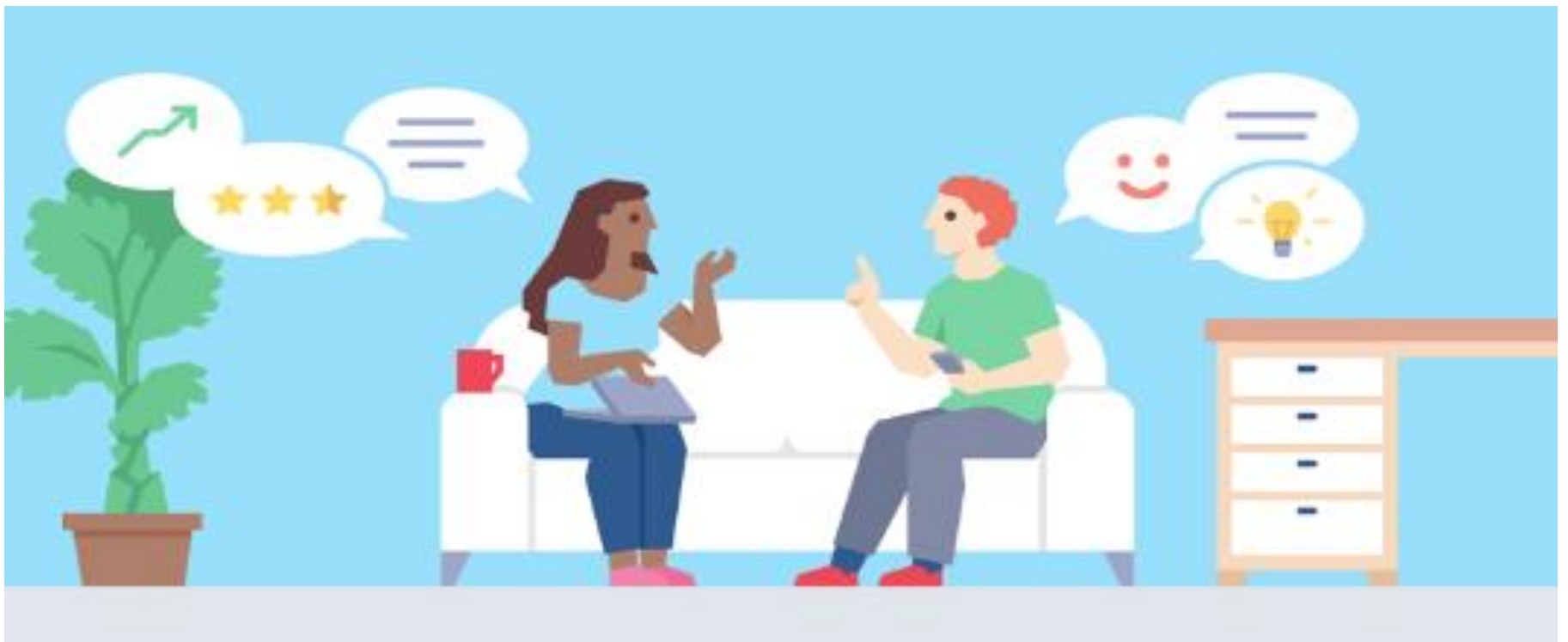
Challenge stereotypes
Widen options



P7 – S1:

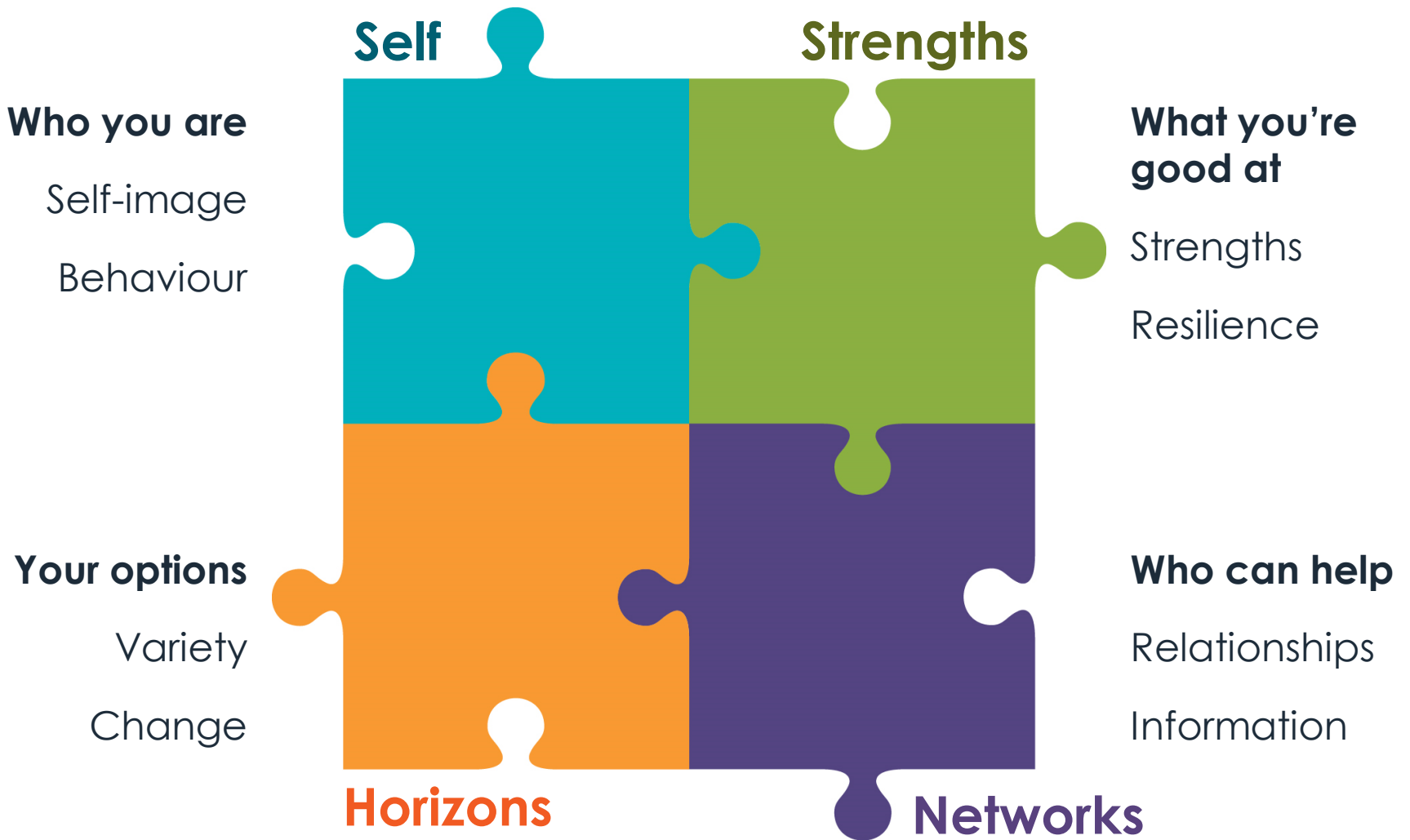
early intervention begins

Build relationship, longer time to support



Skills Development Scotland Career Education Standard expectation

To offer 'drop in' clinics and group work sessions for young people, as well as a 1-2-1 session appropriate to their needs and ongoing support for young people at risk of not finding a positive destination or finding decision-making particularly difficult



Career skills for employability

ASN for learning allowance

Disabled student allowance

Enhanced funding

Job start payment

Princes Trust Development Awards

Training: employability fund, NTTF, apprenticeship pathways

Disability / ASN support team

Access to work

Reasonable adjustments

College

University

Apprenticeships

Employment



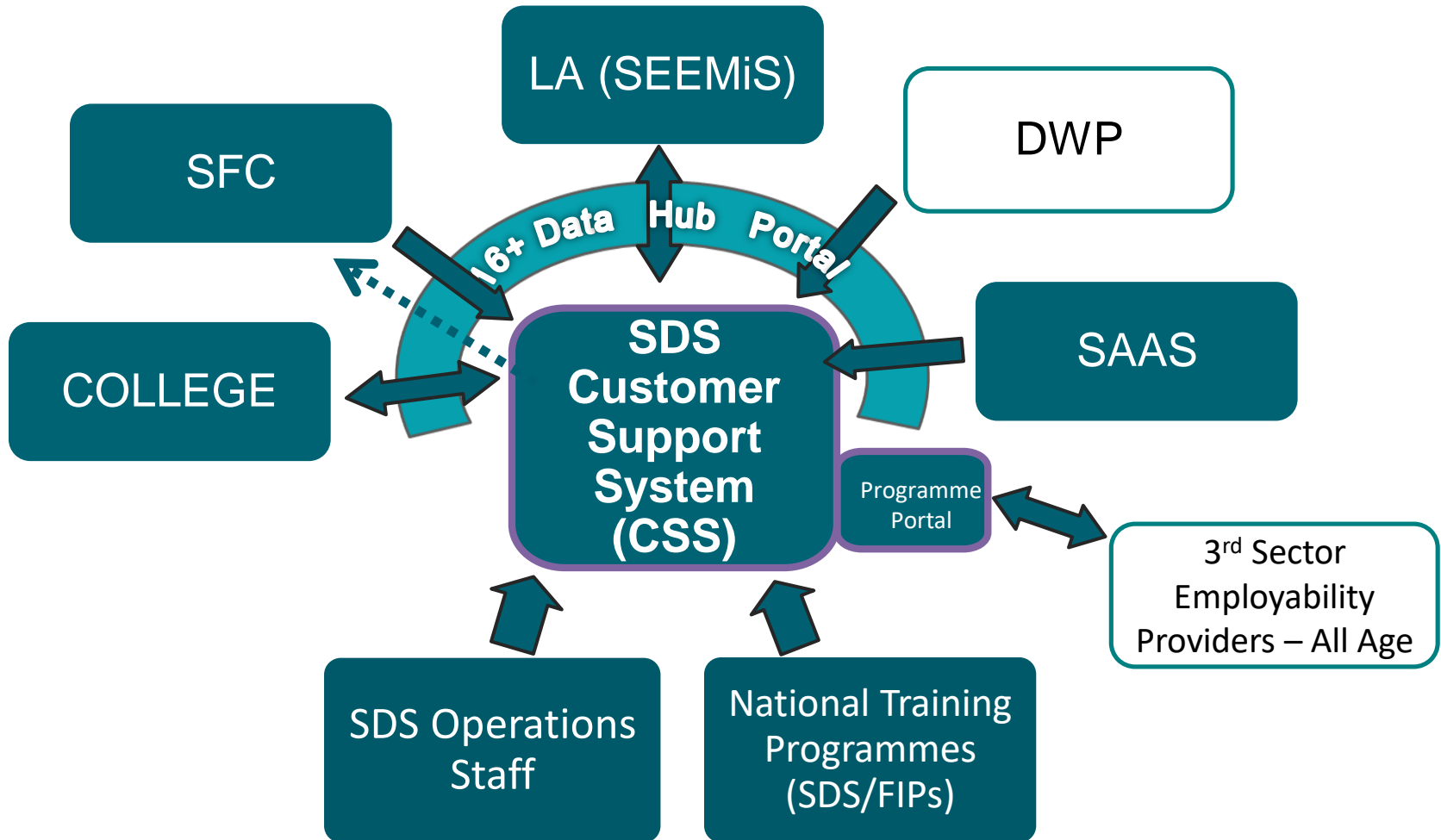
Accessing routes and pathways

finance and support available to make options realistic

The 16+ Data Hub inc. Programme Portal

Multi-Partner Data Sharing

One way & Two way Data Flows (December 2020)



Contact us

SDS Equality POCs

Equality policy / strategy - Elaine Walls

elaine.walls@sds.co.uk

CIAG - Pauline Stratford

pauline.stratford@sds.co.uk

Find your local SDS centre

<https://www.myworldofwork.co.uk/centres/>

My World of Work

www.myworldofwork.co.uk

SDS Apprenticeship Equality team

Equality.Apprenticeships@sds.co.uk